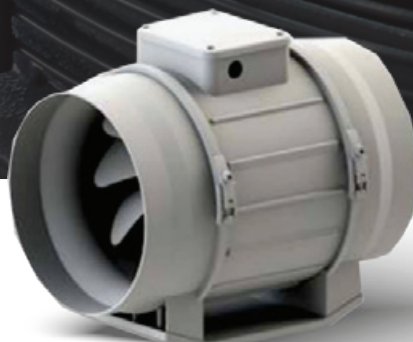


# INSTALLATION OPERATING MAINTENANCE MANUAL

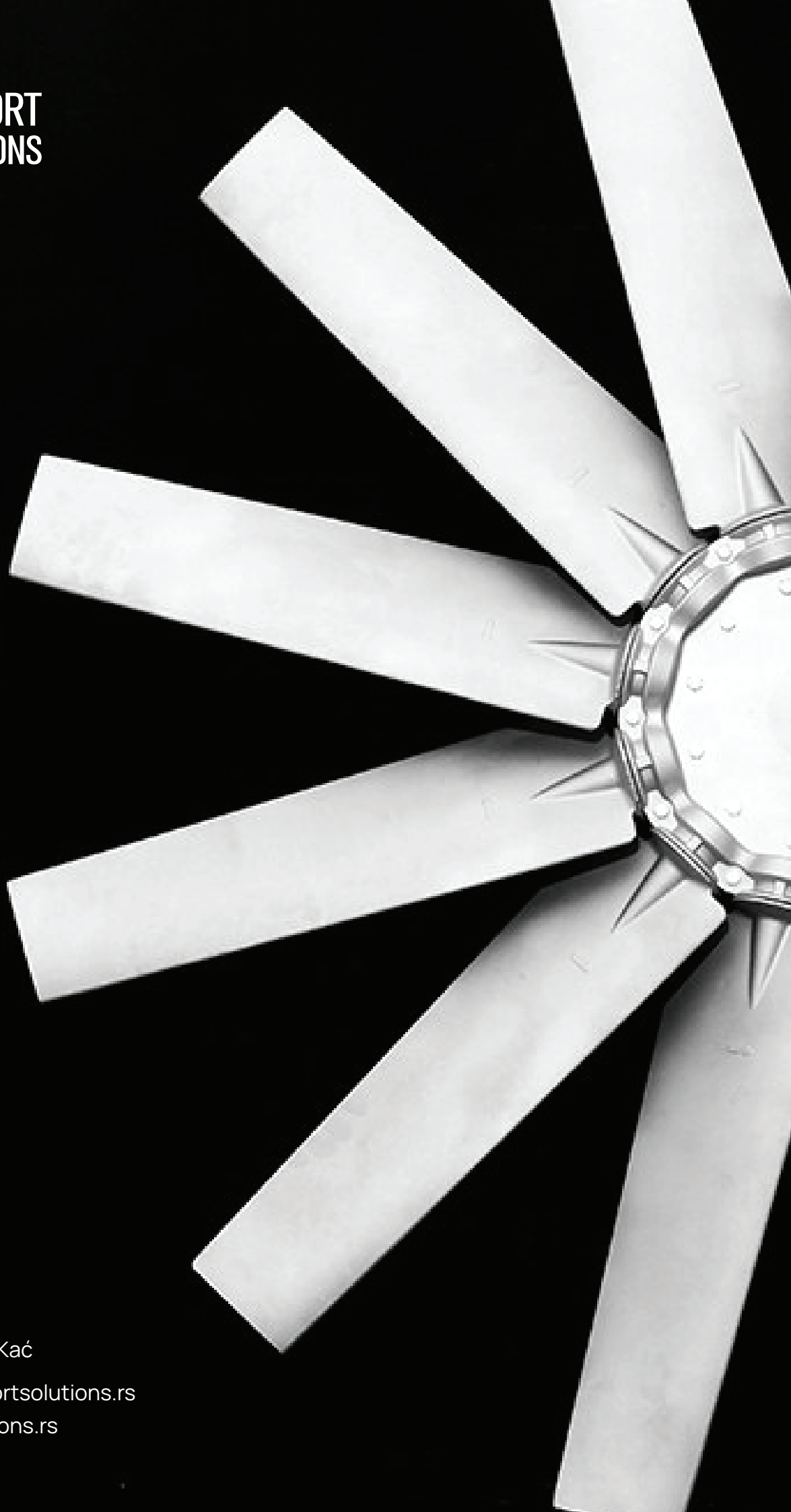
## WARRANTY CERTIFICATE

**MODEL** MIXED FLOW  
IN-LINE FAN





COMFORT  
SOLUTIONS



## KONTAKT

+381 66 804 7733

Delfe Ivanić 32, 21241 Kać

[zeljka.basaric@comfortsolutions.rs](mailto:zeljka.basaric@comfortsolutions.rs)

[office@comfortsolutions.rs](mailto:office@comfortsolutions.rs)

# Content

1. INTRODUCTION .....	3
2. GENERAL DESCRIPTION .....	4
3. ASSEMBLY .....	5
4. COMMISSIONING AND OPERATION .....	6
5. HANDLING .....	6
6. MAINTENANCE .....	6
7. TROUBLE FINDING .....	6
8. WARRANTY TERMS .....	6

## 1. INTRODUCTION

Before operating the KAYITES ENGINEERING branded KAF Mixed Flow Fan, please carefully examine the user manual and keep it. Do not use the devices as a workbench or a storage place. The KAF Mixed Flow In-Line Fan may only be operated under conditions suitable for its design purposes and specifications.



READ THIS MANUAL BEFORE OPERATING AND KEEP IT WITHIN EASY REACH OF THE SERVICE PERSONNEL.

THIS DEVICE MAY ONLY BE OPERATED UNDER CONDITIONS SUITABLE FOR ITS DESIGN PURPOSES AND SPECIFICATIONS. OTHERWISE, THE RESPONSIBILITY BELONGS TO THE PERSON MAKING THE APPLICATION.

DO NOT USE THIS DEVICE IN EXPLOSIVE AND CORROSIVE ENVIRONMENTS.

RESPONSIBILITY FOR MALFUNCTIONS THAT MAY OCCUR AS A RESULT OF UNAUTHORIZED PERSONNEL'S INTERVENTION TO THE DEVICE OR THE USE OF NON-ORIGINAL SPARE PARTS BELONGS TO THE APPLICATION.

THIS APPLIANCE IS NOT INTENDED FOR USE BY PERSONS (INCLUDING CHILDREN) WITH REDUCED PHYSICAL, SENSORY OR MENTAL CAPABILITIES, OR LACK OF EXPERIENCE AND KNOWLEDGE, UNLESS THEY HAVE BEEN GIVEN SUPERVISION OR INSTRUCTION CONCERNING USE OF THE APPLIANCE BY A PERSON RESPONSIBLE FOR THEIR SAFETY.

CHILDREN SHOULD BE SUPERVISED SO THAT THEY DO NOT PLAY WITH THE APPLIANCE.

## 2. GENERAL DESCRIPTION

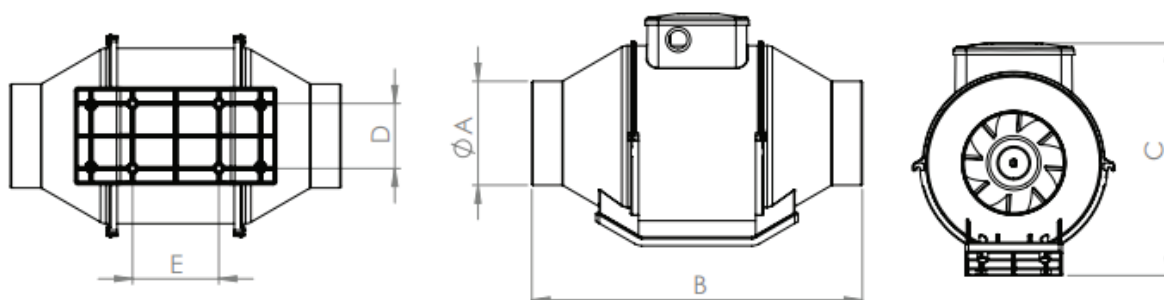
KAF fans can be used in your ventilation systems with their mixed flow propeller and efficient motor. It has fire resistant feature in V0 class.



THE FANS DO NOT CONTAIN "ASBESTOS" MATERIAL THAT IS HARMFUL TO HUMAN HEALTH.

THE FANS DO NOT CONTAIN ANY "PCB (POLYCHLORINATED BIPHENYL)" MATERIAL THAT IS HARMFUL TO HUMAN HEALTH.

THE FANS DO NOT CONTAIN "MERCURY" WHICH IS HARMFUL TO HUMAN HEALTH.



## 3. TECHNICAL INFORMATION AND FEATURES

The physical characteristics to which the product codes of the fans correspond are stated below.

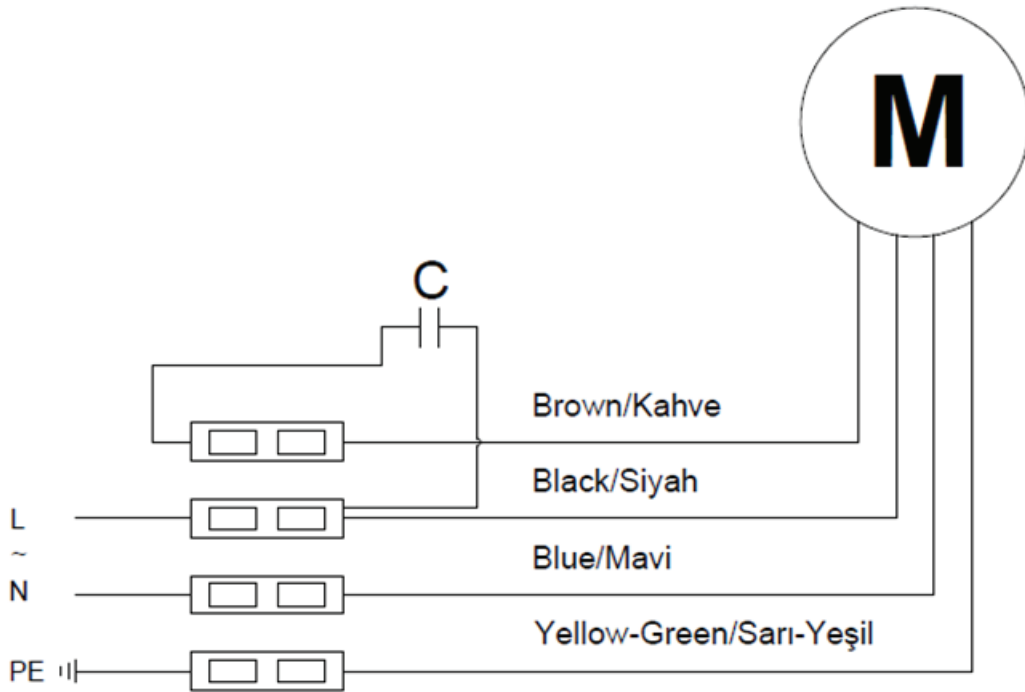


- Do not interfere with other systems (sprinklers, power lines, fire lines)
- It consumes less energy as it does not operate continuously and does not experience pressure loss in air ducts compared to traditional systems.

## 4. ASSEMBLY

Before starting the fan assembly process, it should be checked that the distance between the fan blades and the fan body is within the specified ranges in the relevant table. In addition, by manually rotating the fan friction, snagging, etc. should be checked. During the installation of the fan, parts that may damage the fan should not be left inside the fan and foreign objects should be prevented from entering the fan. Safety measures should be taken in the assembly area and unauthorized persons should be prevented from entering the assembly area while mounting.

The fan should be installed in a way that can be easily serviced. The grounding connection must be made correctly. The electrical connection must be made by a qualified electrician using the wiring diagram attached to the cover of the junction box.



ALL ELECTRICAL CONNECTIONS MUST BE MADE IN ACCORDANCE WITH EN 60204-1 STANDARD. ELECTRICAL CONNECTIONS SHOULD BE MADE BY EXPERIENCED AND TRAINED ELECTRICAL TECHNICIANS.

ALL FANS HAVE A CONNECTION BOX. SUITABLE FOR DEVICE CAPACITY; SOCKET, SOCKET INSURANCE, AND CABLE CUTTING MUST BE SELECTED.

ALL POLES OF THE FIXED CONNECTED DEVICE MUST BE ESTABLISHED WITH A SUITABLE CIRCUIT BREAKER.

THE WINGS OF THE DEVICES MUST BE INSTALLED 2.3 M ABOVE THE FLOOR. PROTECTIVE GLASSES MUST BE WORN DUE TO THE RISK OF INJURY TO THE EYES BY DUST AND CHIP PARTS AT THE INITIAL COMMISSIONING STAGE.

THE DEVICE MUST BE GROUNDED. DEVICE GROUND CONNECTION; MUST BE MADE THROUGH THE TERMINAL BLOCK ON THE ENERGY BOX AND THE GROUND BOLT ON THE HOUSING.

OCCUPATIONAL HEALTH AND SAFETY RULES MUST BE FOLLOWED DURING THE INSTALLATION, AND UNAUTHORIZED PERSONS MUST BE PREVENTED TO ENTER THE AREA OF INSTALLATION.

FOR DUCT AND SECTION FANS, PRECAUTIONS MUST BE TAKEN TO PREVENT THE FLOW OF GAS TO THE ROOM FROM OPEN GAS PRESSURE OR OTHER FUEL-BURNING DEVICES.



## 4. COMMISSIONING AND OPERATION

Before commissioning, make sure that; Make sure that the device is positioned correctly, that the electrical connections are made correctly and that it operates at the right performance, that any debris and foreign objects generated during installation are removed from the mounting area and the duct where the fan is installed. Check the distance between the blades and the fan housing before switching on the fan. If this distance is correct, operate the fan briefly. Check that the direction of rotation of the fan matches the arrow on the housing. If the arrow and direction of rotation do not match, move the two phases and set the correct direction of rotation.

## 5. HANDLING

The fans are delivered in cardboard packages wrapped in plastic foils. The fans must be transported in the original packaging when transporting them to the installation site. During transport, care must be taken not to damage the connection cables, junction box, silencers and wire mesh. Care should be taken when loading and unloading to avoid possible damage.

## 6. MAINTENANCE

Check the bolt connections on the fan, the presence of dust on the fan blade, the function of the safety and control elements, the coil resistances and the operating current at least once a year. Make sure that all electrical connections to the fan have been disconnected and the fan has stopped before intervening. If necessary, original spare parts must be used for maintenance, otherwise the manufacturer accepts no liability. The fan should be cleaned when necessary or at least once a year. Use a vacuum cleaner or compressed air to clean the fan. Fan motor bearings do not require maintenance, they should only be replaced if necessary. The fan motor must not be in contact with water. Fan cleaning must be carried out without moving the blades and damaging them. Make sure that there is no sound from the fan after maintenance.

## 7. TROUBLE FINDING

It is necessary to turn off the fan before checking the fan and the system. During maintenance, the appliance must be completely disconnected from the power supply. All switches and breakers must be turned OFF and locked. In addition, the fan DO NOT OPERATE "mark should be placed on the control panel. Make sure that the fan blade is not obstructed by an object, if the problem is still not resolved, contact your fan supplier. If the fan is returned to the supplier, make sure that the fan is clean, that the connecting cable is undamaged and that there is an error report attached to the fan.

## 8. WARRANTY TERMS

- The warranty period starts from the date of delivery and is 2 years (24 months).
- All parts of the product are under warranty except the engine.
- In the event that the goods are found to be defective, the consumer shall have the right to take part in Article 11 of the Law No. 6502 on Consumer Protection;
  1. Return from the contract,
  2. Requesting a discount from the sales price,
  3. Request for free repair,
  4. Requesting that the sold person be replaced with a non-defective amount may use one of his rights.

**Out of Warranty:**

- Damage caused by transport after delivery to the consumer, external impacts. (damage and failures due to impact, breaking, scratching and chemical factors)
- Improper storage and ambient conditions made by after-sales customers
- Damage caused by high or low voltage or due to electrical installation.
- Incorrect capacity and model selection, incorrect installation.
- Problems caused by the absence of fuses in the electrical installation, the use of protection relays and thermal devices provided in the devices, or missing or incorrect connections, lack of grounding.
- Problems caused by external factors. (Disasters such as natural disasters, fire, flood etc.)
- Problems caused by inappropriate ambient conditions when using the device. (dust, water, dirt, moisture)
- Damage caused by forgotten foreign materials in the device and the fund engine.

In the event that a warranty condition is detected, the user shall notify Kayı tes Engineering or its authorized dealer with the original copy of the fully completed warranty document and the error or fault it has detected. If the assessment determined by Kayı tes Engineering or its authorized dealer is confirmed to be within the scope of warranty , repairs, replacement of parts or replacement of the product shall be made as determined by Kayı tes Engineering or its authorized dealer. The warranty for parts with spare parts status (parts replaced in your repaired product, out of warranty) is 6 months. The warranty of the replaced parts of the devices repaired during the warranty period is up to the remaining warranty period of the product.

<b>MANUFACTURER</b> Title: KAYI-TES MÜHENDİSLİK TAAH. İLET. ELEKT. VE DAYA. TÜK. MAL. SAN. TIC. LTD. ŞTİ. Address: F.ÇAKMAK MAH.ASLIM CAD.NO:42/C, KARATAY/KONYA Telephone: 0 (332) 345 36 76 Fax: 0 (332) 345 36 77 e-mail: bilgi@kayites.com.tr	<b>AUTHORIZED SIGNATURE:</b>  <b>AUTHORIZED COMPANY STAMP:</b>
--	--

<b>DATE:</b>	<b>INVOICE NUMBER:</b>
--------------	------------------------

<b>PRODUCT BRAND AND MODEL INFORMATION</b> ROUND CHANNEL FAN KAF 100, KAF 125, KAF 150, KAF 160, KAF 200, KAF 250, KAF 315	<b>NOTE:</b> Warranty Period: 2 years Maximum Repair Time: 30 working days
<b>SERIAL NUMBER:</b>	



**COMFORT  
SOLUTIONS**

+381 66 804 7733

Delfe Ivanić 32, 21241 Kać

[zeljka.basarić@comfordsolutions.rs](mailto:zeljka.basarić@comfordsolutions.rs)

[office@comfordsolutions.rs](mailto:office@comfordsolutions.rs)